



News from Chalvington, Deanland, Laughton & Ripe

# The Bugle

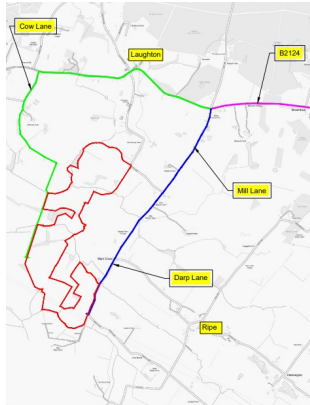
No 245 14th July 2025

Short and summery

Contributions to trading.as.wdr@googlemail.com

*"Reminds me of my safari in Africa. Somebody forgot the corkscrew and for several days we had to live on nothing but food and water."*

W C Fields



## Go ahead for 40MW solar farm

Wealden's planning committee has approved plans for a solar farm and 30MW energy storage covering 80 hectares of the Colbrans Farm Estate in Laughton, subject to some

additional requirements for passing places and road restoration during construction along Cow Lane. The committee heard objections from one neighbour and from Malcolm McDonnell of the Sussex Ramblers. Two representatives of Innova, the operators, and one neighbour spoke in support.

Michelham Priory hosts the East Sussex Jaguar Enthusiasts' Club, Sunday 20th July 11am - 4pm.



## Mine hosts

Steve Keegan and Bethany Warren, new custodians of the refurbished Trevor Arms in Glynde, which opened its doors last Friday.



A record 450 motorbikes turned up for last week's Bike Night at the Six Bells in Chiddingfold. Centre: A Honda CB1000 Hornet SP.



Fruitful Sounds DJs Nick Carling and Danny Webb were giving it large at the wheels of steel for the Roebuck Inn's Reggae Night on Friday.

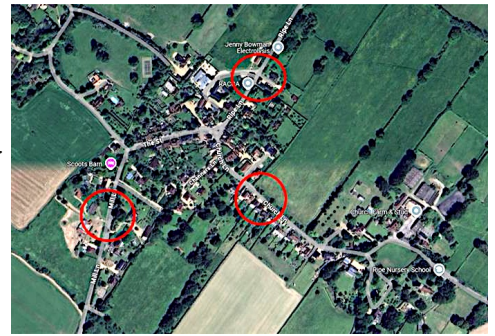
The Times has ranked Firle the 8th prettiest village in the UK: "Much of this village near Lewes is still owned by the Gage family, leading to a feudal but aesthetic vibe. The village cricket team has been playing on the same pitch since 1758, while the lack of street markings and lights adds to Firle's slightly 1930s arty aspic feel"



## Ripe speed surveys underway

Four speed and traffic counting exercises are underway in Ripe, as the Parish Council

tries to make its case for a 20mph limit. They'll be in place until Thursday - three in the areas circled in red, and a fourth along The Street.



East Sussex County Council will only consider a 20mph limit where the average speed is already less than 24mph.



## Mind that bike !

Watch out for bikes on Sunday 20th July, as the 180km cycle route of the Tribourne Long-distance Triathlon runs through our villages. Mill Lane, Laughton, down to the Darp Lane junction with Firle Road will be closed to through traffic from 6am to 4pm, with residents needing access asked to travel one way from the north.

It's expected that the vast majority of competitors will be through the course by 1100am.

## Hosepipe ban across Kent and Sussex



South East Water have announced a hosepipe ban. You can continue to water by drip irrigation systems, and water new saplings where there's no alternative. There was no ban in 2024; in 2023 the ban lasted from 26th June to 4th August.



Don't forget to get your entry forms for the Ripe and Chalvington Flower Show to the Villages Stores by Wednesday 16th July, late entries accepted up to Friday, at double the price. Then buy your raffle tickets, also available at the shop, for prizes including the fizz left. And see you at the show itself on Saturday 19th July at The Yew Tree, starting at 2.30pm - bring cash for the stalls and flower, produce and cake auction !



The new vicar for Ripe, Chalvington and Laughton will be installed on Wednesday 1st October at 7.30pm, at All Saints', Laughton. Revd Steve Osei-Mensah's first service will be the Harvest Festival, on Sunday 5th October, also at Laughton. Steve and his wife Emma plan to move into the Rectory at Laughton next month.



Next service: Sunday 20th July at 10.30am - Holy Communion, St. John the Baptist, Ripe