



News from Chalvington, Deanland, Laughton & Ripe

# The Bugle

No 257 6th October 2025

We try harder

Contributions to trading.as.wdr@googlemail.com

*"Our scientific power has outrun our spiritual power.  
We have guided missiles and misguided men."*

Martin Luther King

## Call for 'brownfield' homes

Research by the Council for the Protection of Rural England suggests that there are enough 'brownfield' sites across Sussex to build 26,000 houses. It calculates that 50% of these sites already have some form of planning permission. In Wealden, it has identified sites that could produce 564 new homes. Across Lewes, there's room for 1,666 homes, and in Eastbourne, 2,419.

The CPRE is calling on the government to introduce a comprehensive 'brownfield first' planning policy.



Chalvington with Ripe Parish Council meets tonight, Monday 6th October, starting at 7pm in the Village Hall.

## Immobile home blocks A27

The A27 was blocked coming into Polegate on Tuesday morning from 8.45am to midday by a lorry carrying a static home. There were huge tailbacks. A 44-year-old Lincolnshire man has been arrested on suspicion of driving under the influence of drugs.

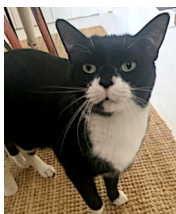
## Victory indoors

Ripe notched up their first win in the Battle Indoor Ladies Stoolball League on Tuesday, with a 224-174 win over Icklesham. Margaux and Meg's 84 partnership gave the team a solid base; and Corinne took three wickets in an over, backed up by some top catches.



There's a clothes swap and sale at The Coach House, Glynde Place, from 10am to 1pm on Saturday 11th October. Tickets at £15; that allows you to bring up to five items (no shoes) and take up to five away. There'll also be a raffle and refreshments, raising funds for Glynde & Beddingham Pool. Book at Glynde Stores, or email [janet.seller@phonecoop.coop](mailto:janet.seller@phonecoop.coop).

Local art historian Emma Rose Barber is giving a talk at Berwick Church on Tuesday 7th October at 7pm. It's based on her book *Medieval Wayfaring*, with particular reference to travellers and wayfarers depicted in art across Sussex churches.



Please keep an eye out for Podrick, missing from his home in Church Lane, Ripe, not far from the Village Stores. Owner Roberta Ashley asks people to check sheds and garages.



*Left: Revd Steve at the altar receiving children's Harvest gifts. Right: At his installation earlier in the week.*



The new rector, Steve Osei-Mensah, got down to work on Sunday with a relaxed Harvest Service before a welcoming congregation of 70. Ripe Nursery sang Autumn songs, alongside the traditional hymns. Lunch followed at Laughton Village Hall, with Steve and his wife Emma meeting more parishioners (below)..



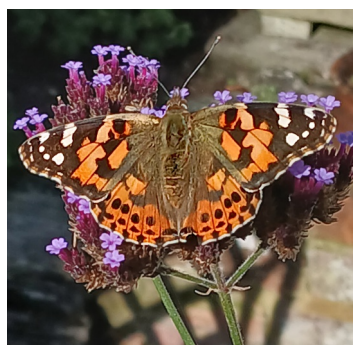
Next Thursday, 9th October, sees a new name for the regular 10.30am Deanland Wood Park service: The Fellowship becomes Deanland Community Church. Leader Graham Horsnell says it's designed to reflect that it's much more than just a monthly service. Sunday 12th October brings a service of Holy Communion at 10.30am at All Saints', Laughton.



*The BBC version of the battle was filmed on a farm in Iceland.*

Big numbers are anticipated at this year's Battle of Hastings re-enactment, happening over Saturday 11th and Sunday 12th October at Battle Abbey. English Heritage say: "We are expecting even more demand for the event than usual, after the BBC's King And Conqueror drama and the news that the Bayeux Tapestry is coming back to England next year." Prices start from £24 per adult and £14 per child, with family discounts available.

Still the fungi are popping up: we think this is a cluster of *Lycoperdon Perlatum*, popularly known as the common puffball, warted puffball, gem-studded puffball or devil's snuff-box.



Left: a prime example of a Painted Lady, a long-distance traveller to Sussex. Each year the butterflies spread northwards from the desert fringes of North Africa, the Middle East, and central Asia, recolonising mainland Europe and reaching Britain and Ireland in late summer.